



# ANNA<sup>®</sup>

# The Traditionalist<sup>®</sup>

2026 ANNA PASTA CATALOG





# 2016 HALL of FAME

Specialty Food Association has created a Hall of Fame for the specialty food industry. The Hall's Mission is to "honor individuals whose accomplishments, impact, contributions, innovations, and successes within the specialty food industry deserve praise and recognition."



**ALFRED CICCOTELLI SR. (MR. C)  
CENTO FINE FOODS, INC.**

Alfred Ciccotelli, Sr. possessed an unbridled passion for Italian specialty foods. Affectionately known as "Mr. C", he pioneered Italian specialty food into the Delaware Valley market and lived by his motto, "Just treat people right". Starting from a rental garage stall, he went on to build what is known today as Cento Fine Foods.



**ALFRED CICCOTELLI JR.  
CENTO FINE FOODS, INC.**

Alfred Ciccotelli, Jr. had tremendous drive and vision as he was first to market by making Italian food part of the specialty food category in mainstream supermarkets. He built Cento into an iconic brand through his leadership, tenacity, and keen market insight. His personal philosophy was captured in "Trust Your Family With Our Family".

# TABLE OF CONTENTS

---

TRADITIONAL LONG CUTS .....	4-7
TRADITIONAL SHORT CUTS .....	8-13
SOUP CUTS.....	14-19
SPECIALTY CUTS.....	20-23
LASAGNE .....	24-25
GNOCCHI.....	26-27
NESTS.....	28-29
EGG PASTA.....	30-31
WHOLE GRAIN .....	32-33
GLUTEN FREE.....	34-35
TRICOLOR.....	36-37
BULK CUTS.....	38-41
4' SECTION.....	42
5' SECTION.....	43
"00" FLOUR.....	44-45
COOK TIMES .....	46



## *Anna Pasta*

Pasta is the foundation of exceptional Italian cuisine. In order for a meal to delight the palate, it must be made using the finest products. Anna pasta is produced using traditional methods of pasta production. The perfect blend of water and 100% durum wheat semolina creates a high quality nutritious product that is always consistent in taste, color and cooking time. This combination guarantees that Anna pasta always cooks *al dente*, or firm in shape and rich in texture to aid in sauce absorption. From anellini to ziti, the Anna brand offers a complete pasta line of over thirty styles and cuts to satisfy your needs.

# ANNA LONG CUTS

70796-33006



70796-33007



70796-33008



70796-33009



UPC	Description	pk/sz	Case W	Pallet QTY	Pallet W
70796-33006	Anna Fettuccine	20/1 lb	21.6 lb	24x5	2642.0 lb
70796-33007	Anna Linguine	20/1 lb	21.1 lb	24x5	2582.0 lb
70796-33008	Anna Linguine Fini	20/1 lb	20.8 lb	24x5	2546.0 lb
70796-33009	Anna Capellini	20/1 lb	21.4 lb	24x5	2618.0 lb

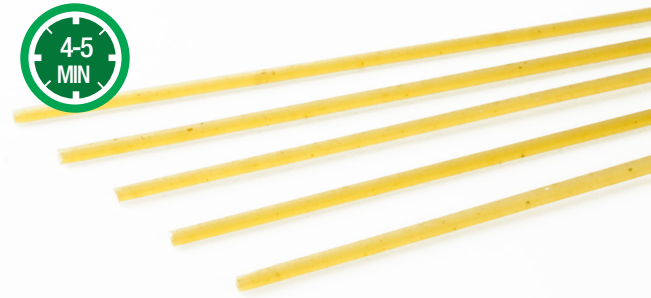


**FETTUCCINE** 70796-33006

Anna Fettuccine is best when paired with thick sauces, as well as cream based sauces. The flat ribbon shape allows the sauce to properly adhere to the pasta.



70796-33007 **LINGUINE**



**LINGUINE FINI** 70796-33008



70796-33009 **CAPELLINI**

The thin, delicate strands of capellini are great as a side dish or entrée. Due to its size, Anna Capellini is perfect with lighter, thinner sauces.

PASTA IMAGES ARE ACTUAL SIZE

# ANNA LONG CUTS

70796-33011



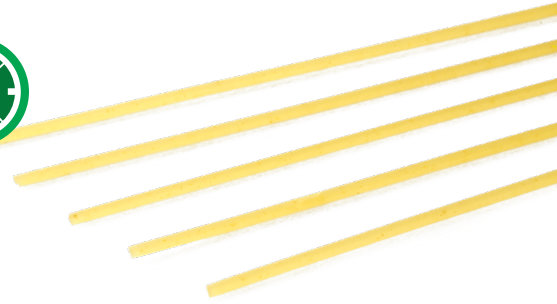
70796-33012



70796-33015



UPC	Description	pk/sz	Case W	Pallet QTY	Pallet W
70796-33011	Anna Spaghettini	20/1 lb	21.0 lb	24x5	2570.0 lb
70796-33012	Anna Spaghetti	20/1 lb	21.1 lb	24x5	2582.0 lb
70796-33015	Anna Bucatini	20/1 lb	21.1 lb	24x5	2582.0 lb



**SPAGHETTINI** 70796-33011



70796-33012 **SPAGHETTI**



**BUCATINI** 70796-33015

This thick, hearty pasta is pierced through the center. Bucatini is usually served with creamy sauces or lighter tomato sauces.

PASTA IMAGES ARE ACTUAL SIZE

# ANNA SHORT CUTS

70796-33040



70796-33018



70796-33041



70796-33042

UPC	Description	pk/sz	Case W	Pallet QTY	Pallet W
70796-33040	Anna Penne	20/1 lb	21.4 lb	6x9	1205.6 lb
70796-33018	Anna Cut Ziti	20/1 lb	21.6 lb	9x6	1216.4 lb
70796-33041	Anna Penne Rigate	20/1 lb	21.2 lb	10x6	1322.0 lb
70796-33042	Anna Pennine Rigate	20/1 lb	21.4 lb	10x6	1334.0 lb



**PENNE** 70796-33040



70796-33041 **PENNE RIGATE**



**CUT ZITI** 70796-33018



70796-33042 **PENNINE RIGATE**

PASTA IMAGES ARE ACTUAL SIZE

# ANNA SHORT CUTS

70796-33024



70796-33021



70796-33023



70796-33034

UPC	Description	pk/sz	Case W	Pallet QTY	Pallet W
70796-33050	Anna Shells	20/1 lb	21.6 lb	9x5	1022.0 lb
70796-33034	Anna Fusilli	20/1 lb	21.6 lb	9x5	1022.0 lb
70796-33023	Anna Mezzi Rigatoni	20/1 lb	21.7 lb	9x5	1026.5 lb
70796-33021	Anna Elicoidali	20/1 lb	21.8 lb	9x5	1031.0 lb
70796-33024	Anna Rigatoni	20/1 lb	21.8 lb	9x5	1031.0 lb



70796-33050 SHELLS



FUSILLI 70796-33034



70796-33023 MEZZI RIGATONI



ELICOIDALI 70796-33021



70796-33024 RIGATONI

Anna Rigatoni is a medium sized, wide, and tube shaped pasta with grooves. The grooves allow the sauce to cling to the pasta. Rigatoni is excellent for hearty thick sauces, such as bolognese.

PASTA IMAGES ARE ACTUAL SIZE

# ANNA SHORT CUTS

70796-33054



70796-33088



70796-33087



70796-33089

UPC	Description	pk/sz	Case W	Pallet QTY	Pallet W
70796-33046	Anna Gnocchi	20/1 lb	21.6 lb	9x6	1216.4 lb
70796-33087	Anna Cavatappi	20/1 lb	21.6 lb	9x5	1022.0 lb
70796-33054	Anna Rotelle	20/1 lb	21.7 lb	9x5	1026.5 lb
70796-33088	Anna Gemelli	20/1 lb	21.5 lb	10x5	1125.0 lb
70796-33089	Anna Radiatori	20/1 lb	21.6 lb	9x5	1022.0 lb



70796-33046 **GNOCCHI**



**CAVATAPPI** 70796-33087



70796-33054 **ROTELLE**



**GEMELLI** 70796-33088



70796-33089 **RADIATORI**

PASTA IMAGES ARE ACTUAL SIZE

# ANNA SOUP CUTS

70796-33065



70796-33075



70796-33063



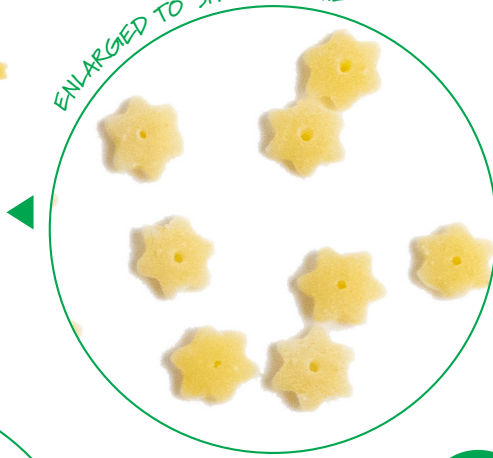
70796-33062

UPC	Description	pk/sz	Case W	Pallet QTY	Pallet W
70796-33075	Anna Pastina	20/1 lb	21.3 lb	13x6	1711.4 lb
70796-33065	Anna Ditali	20/1 lb	21.5 lb	9x6	1211.0 lb
70796-33063	Anna Ditalini	20/1 lb	21.1 lb	15x6	1949.0 lb
70796-33062	Anna Tubetti	20/1 lb	21.2 lb	10x7	1534.0 lb



70796-33075 **PASTINA**

ENLARGED TO SHOW DETAIL



ENLARGED TO SHOW DETAIL

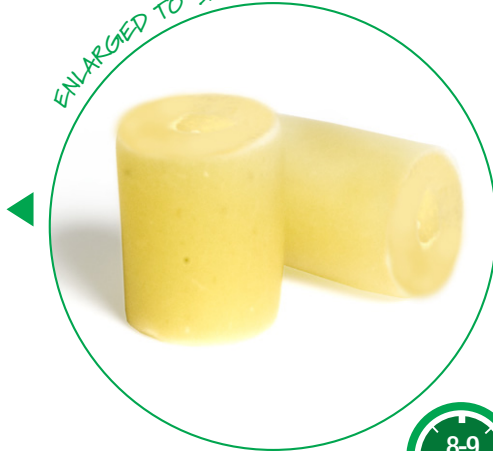


**DITALI** 70796-33065



70796-33063 **DITALINI**

ENLARGED TO SHOW DETAIL



ENLARGED TO SHOW DETAIL



**TUBETTI** 70796-33062

PASTA IMAGES ARE ACTUAL SIZE

# ANNA SOUP CUTS

70796-33078



70796-33071



70796-33074



UPC	Description	pk/sz	Case W	Pallet QTY	Pallet W
70796-33078	Anna Acini Di Pepe	20/1 lb	21.0 lb	15x6	1940.0 lb
70796-33074	Anna Orzo	20/1 lb	21.3 lb	13x6	1711.4 lb
70796-33071	Anna Anellini	20/1 lb	21.3 lb	10x7	1541.0 lb

ENLARGED TO SHOW DETAIL



ACINI DI PEPE 70796-33078

ENLARGED TO SHOW DETAIL



70796-33074 ORZO

ENLARGED TO SHOW DETAIL



ANELLINI 70796-33071

PASTA IMAGES ARE ACTUAL SIZE

# ANNA SOUP CUTS

70796-33095



70796-33052



70796-33081



UPC	Description	pk/sz	Case W	Pallet QTY	Pallet W
70796-33095	Anna Farfalline	12/1 lb	13.0 lb	10x7	960.0 lb
70796-33052	Anna Baby Shells	20/1 lb	21.3 lb	10x6	1328.0 lb
70796-33081	Anna Elbows	20/1 lb	21.3 lb	10x6	1328.0 lb



**FARFALLINE** 70796-33095



70796-33052 **BABY SHELLS**



**ELBOWS** 70796-33081

PASTA IMAGES ARE ACTUAL SIZE

# ANNA SPECIALTY CUTS

70796-33130



Anna Long Fusilli  
Shipper



70796-33016



70796-33108

70796-33019



UPC	Description	pk/sz	Case W	Pallet QTY	Pallet W
70796-33130	Anna Long Fusilli Shipper	48 pc	56.5 lb	2x5	615.0 lb
70796-33016	Anna Mafaldine	12/1 lb	13.1 lb	10x7	967.0 lb
70796-33019	Anna Long Ziti	12/1 lb	13.0 lb	11x7	1051.0 lb
70796-33108	Anna Long Fusilli	12/1 lb	13.6 lb	8x8	920.4 lb



**70796-33019 LONG ZITI**

Anna Long Ziti is a wide, tube-shaped pasta with a smooth texture. It pairs well with a seafood or meat based sauce.



**MAFALDINE 70796-33016**

Anna Mafaldine is a long, flat pasta that is curled like a ribbon on either side. The ribbon allows the sauce to easily stick to the pasta. Anna Mafaldine can hold up to a variety of sauces including meat and seafood based sauces.



**LONG FUSILLI 70796-33108**

These long, spiraled pasta strands are packaged in their original "U" shape, which is how they are hung during the drying process.

**PASTA IMAGES ARE ACTUAL SIZE**

# ANNA SPECIALTY CUTS

70796-33035



70796-33072



70796-33091



70796-33093



UPC	Description	pk/sz	Case W	Pallet QTY	Pallet W
70796-33035	Anna Fusilli Corti Col Buco	12/1 lb	21.3 lb	9x6	1197.5
70796-33125	Anna Paccheri	12/1 lb	15.0 lb	5x6	500.0 lb
70796-33091	Anna Orecchiette	12/1 lb	12.9 lb	10x7	953.0 lb
70796-33093	Anna Farfalle	12/1 lb	13.2 lb	10x6	842.0 lb
70796-33072	Anna Anellini Siciliani	20/1 lb	20.8 lb	9x7	1357.3 lb



70796-33035 **FUSILLI CORTI COL BUCO**



**ORECCHIETTE** 70796-33091



70796-33093 **FARFALLE**



**ANELLINI SICILIANI** 70796-33072

PASTA IMAGES ARE ACTUAL SIZE

# ANNA JUMBO SHELLS & LASAGNE

70796-33133



70796-33001



70796-33002



UPC	Description	pk/sz	Case W	Pallet QTY	Pallet W
70796-33001	Anna Traditional Lasagne	12/1 lb	15.6 lb	9x7	1032.8 lb
70796-33002	Anna No Boil Lasagne	12/13.2 oz	14.1 lb	11x7	1135.7 lb



70796-33133 **JUMBO SHELLS**



**TRADITIONAL LASAGNE**

70796-33001



70796-33002 **NO BOIL LASAGNE**

PASTA IMAGES ARE ACTUAL SIZE

# ANNA GNOCCHI

70796-36006



70796-36005



UPC	Description	pk/sz	Case W	Pallet QTY	Pallet W
70796-36006	Anna Potato Gnocchi	12/17.6 oz	14.3 lb	19x7	1951.9 lb
70796-36005	Anna Mini Potato Gnocchi	12/17.6 oz	14.5 lb	17x8	2022.0 lb
70796-36003	Anna Whole Wheat Gnocchi	12/17.6 oz	14.6 lb	17x8	2035.6 lb



POTATO GNOCCHI 70796-35006



70796-36005 MINI POTATO GNOCCHI

CONVENIENT DISPLAY BOX



PASTA IMAGES ARE ACTUAL SIZE

# ANNA NESTS

70796-33106



70796-33103



70796-33102



70796-33107

UPC	Description	pk/sz	Case W	Pallet QTY	Pallet W
70796-33106	Anna Capelli D'Angelo Nests	12/1 lb	13.4 lb	10x5	720.0 lb
70796-33103	Anna Fettuccine Nests	12/1 lb	13.6 lb	10x5	730.0 lb
70796-33102	Anna Pappardelle Nests	12/1 lb	13.3 lb	10x5	715.0 lb
70796-33107	Anna Fettuccine Spinach Nests	12/1 lb	13.3 lb	10x5	715.0 lb



4-5  
MIN

CAPELLI D'  
ANGELO NEST 70796-33106



13-14  
MIN

70796-33103 FETTUCCINE NESTS



11-12  
MIN

PAPPARDELLE NESTS 70796-33102



12-13  
MIN

70796-33107 FETTUCCINE  
SPINACH NESTS

PASTA IMAGES ARE ACTUAL SIZE

# ANNA EGG PASTA

70796-33104



NET WT 16 OZ (1 LB) 454g

UPC	Description	pk/sz	Case W	Pallet QTY	Pallet W
70796-33104	Anna Egg Fettuccine Nests	12/1 lb	14.8 lb	5x8	642.0 lb



70796-33104 **EGG**  
**FETTUCCINE NESTS**

\*PASTA IMAGES ARE ACTUAL SIZE

# ANNA ORGANIC WHOLE WHEAT CUTS

70796-35041



70796-35012



UPC	Description	pk/sz	Case W	Pallet QTY	Pallet W
70796-35012	Anna Organic Whole Wheat Spaghetti	20/1 lb	21.1 lb	24x4	2071.8 lb
70796-35041	Anna Organic Whole Wheat Penne Rigate	12/1 lb	12.8 lb	10x6	818.0 lb



ORGANIC WHOLE WHEAT SPAGHETTI 70796-35012



70796-35041 ORGANIC WHOLE WHEAT PENNE RIGATE

PASTA IMAGES ARE ACTUAL SIZE

# ANNA GLUTEN FREE

70796-37141



70796-37181



70796-37112



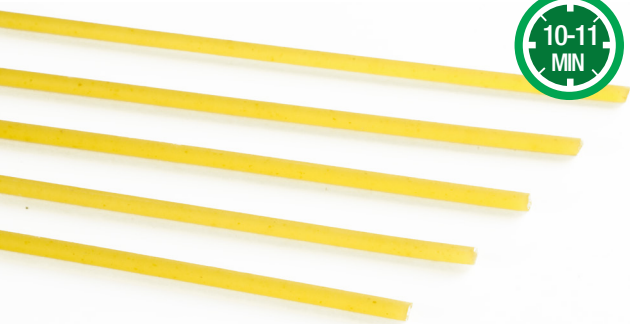
UPC	Description	pk/sz	Case W	Pallet QTY	Pallet W
70796-37141	Anna Gluten Free Penne Rigate	12/8 oz	6.6 lb	19x7	921.2 lb
70796-37181	Anna Gluten Free Elbows	12/8 oz	6.6 lb	19x7	921.2 lb
70796-37112	Anna Gluten Free Spaghetti	12/8 oz	6.6 lb	20x12	1629.2 lb



70796-37141 **GLUTEN FREE  
PENNE RIGATE**



**GLUTEN FREE  
ELBOWS** 70796-37181



70796-37112 **GLUTEN  
FREE SPAGHETTI**

\*PASTA IMAGES ARE ACTUAL SIZE

# ANNA TRICOLOR

70796-33109



70796-33141



70796-33193



UPC	Description	pk/sz	Case W	Pallet QTY	Pallet W
70796-33109	Anna Tricolor Fusilli	12/1 lb	13.1 lb	6x10	836.0 lb
70796-33141	Anna Tricolor Penne Rigate	12/1 lb	12.8 lb	10x6	818.0 lb
70796-33193	Anna Tricolor Farfalle	12/1 lb	12.9 lb	10x6	824.0 lb



TRICOLOR FUSILLI 70796-33109



70796-33141 TRICOLOR PENNE RIGATE



TRICOLOR FARFALLE 70796-33193

PASTA IMAGES ARE ACTUAL SIZE

# ANNA BULK CUTS

70796-34006



70796-34007



70796-34009



70796-34012

UPC	Description	pk/sz	Case W	Pallet QTY	Pallet W
70796-34006	Anna Fettuccine Bulk	4/6 lb	25.7 lb	24x4	2517.2 lb
70796-34007	Anna Linguine Bulk	4/6 lb	24.9 lb	24x4	2440.4 lb
70796-34009	Anna Capellini Bulk	4/6 lb	24.9 lb	24x4	2440.4 lb
70796-34012	Anna Spaghetti Bulk	4/6 lb	24.9 lb	24x4	2440.4 lb



FETTUCCINE BULK 70796-34006



70796-34007 LINGUINE BULK



CAPELLINI BULK 70796-34009



70796-34012 SPAGHETTI BULK

PASTA IMAGES ARE ACTUAL SIZE

# ANNA BULK CUTS

70796-34041



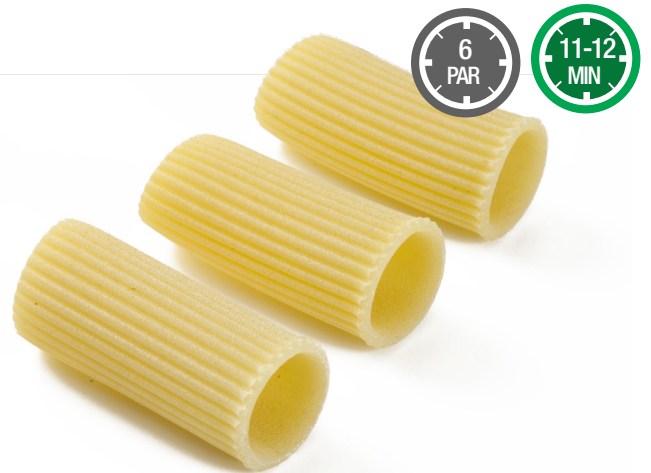
70796-34024



UPC	Description	pk/sz	Case W	Pallet QTY	Pallet W
70796-34041	Anna Penne Rigate Bulk	4/6 lb	25.7 lb	10x5	1335.0 lb
70796-34024	Anna Rigatoni Bulk	4/6 lb	26.2 lb	7x4	783.6 lb



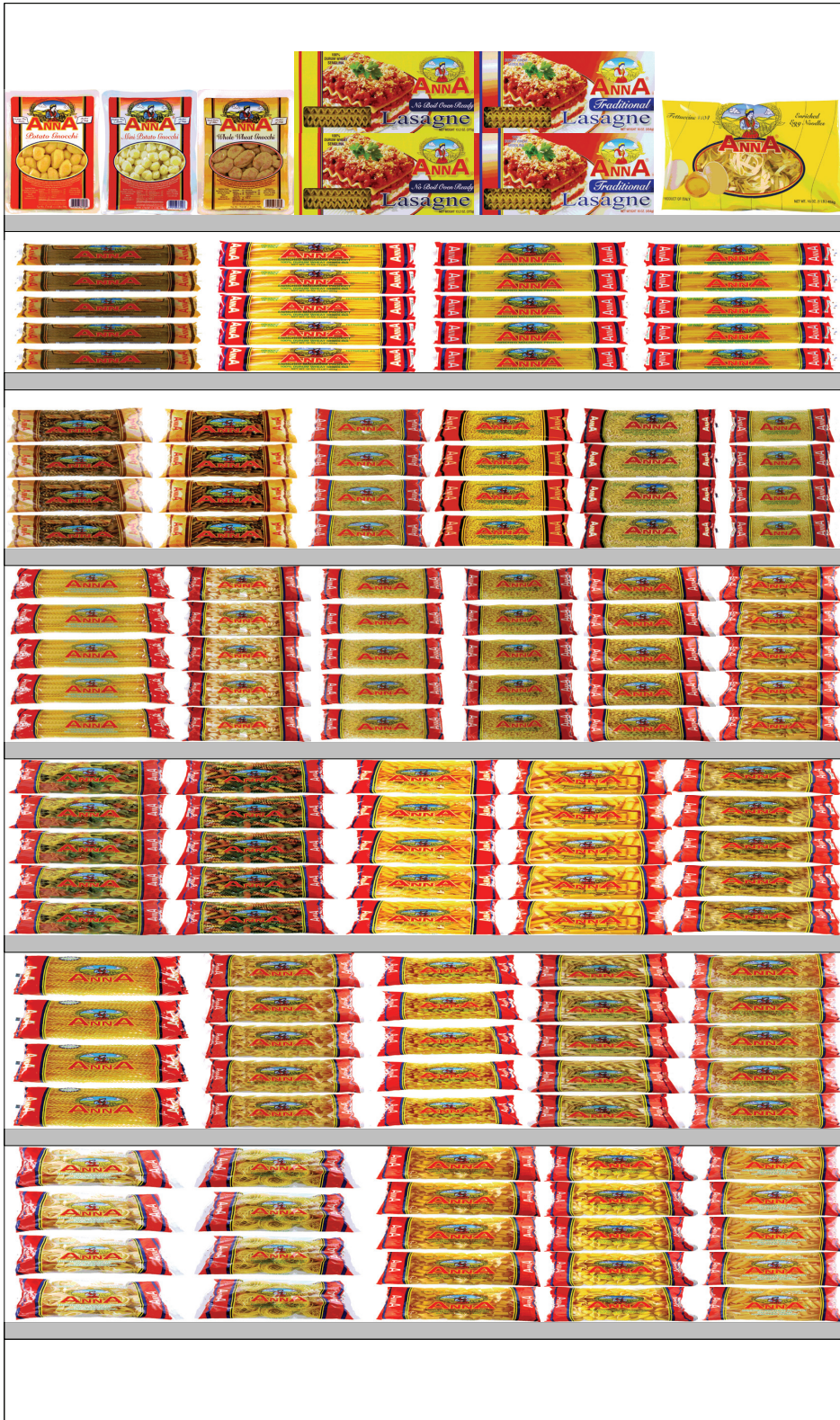
70796-34041 PENNE RIGATE BULK



RIGATONI BULK 70796-34024

PASTA IMAGES ARE ACTUAL SIZE

# 4' SECTION | AUTHENTIC ITALIAN PASTA SETS ASK YOUR SALES REPRESENTATIVE FOR A CUSTOM PLANOGRAM FOR YOUR LOCATION



# 5' SECTION

AUTHENTIC ITALIAN PASTA SETS  
ASK YOUR SALES REPRESENTATIVE FOR A CUSTOM PLANOGRAM FOR YOUR LOCATION



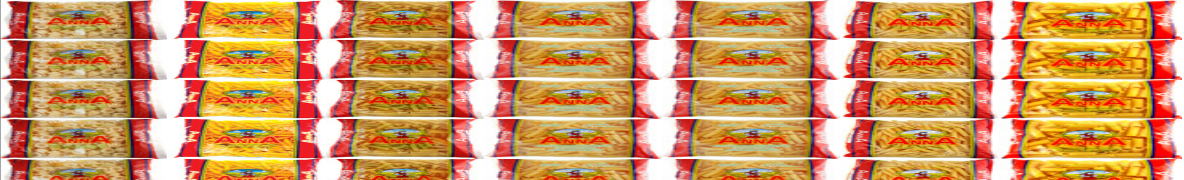
Shelf 6: Height 1' 1.50", Length 5' 0.00", Depth 2' 0.00"



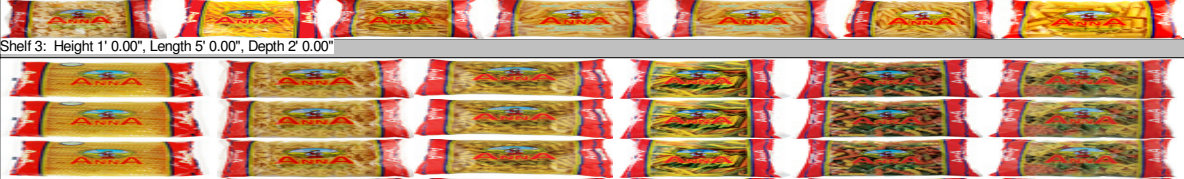
Shelf 5: Height 0' 9.00", Length 5' 0.00", Depth 2' 0.00"



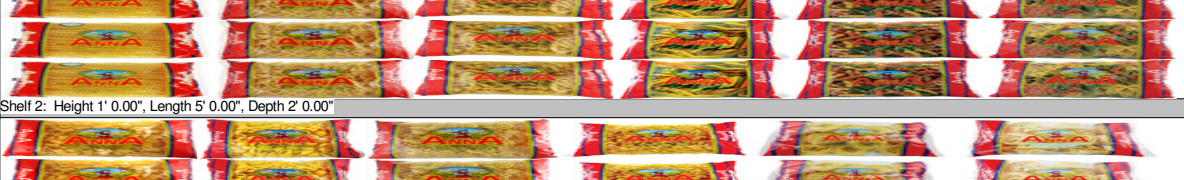
Shelf 4: Height 0' 9.00", Length 5' 0.00", Depth 2' 0.00"



Shelf 3: Height 1' 0.00", Length 5' 0.00", Depth 2' 0.00"



Shelf 2: Height 1' 0.00", Length 5' 0.00", Depth 2' 0.00"



Shelf 1: Height 1' 0.00", Length 5' 0.00", Depth 2' 0.00"



# TIPO "00" FLOUR



## *Why Anna Type "00" Flour is special*

- Smooth and easy to work with
- Stretches for a thinner crust
- Authentic naples style
- Tailored to high temperature ovens
- Less impurities for more even cooking
- Yields a light, crunchy crust
- All bite no chew
- Higher natural nutrients
- Consistent long-rise dough
- Lower ash and moisture

UPC: 70796-00017  
Pack Size: 1/25 kg  
Case Weight: 55.6 lb  
Pallet Quantity: 5x5  
Pallet Weight: 1440.0 lb

# ANNA TIPO "00" FLOUR



UPC	Description	pk/sz	Case W	Pallet QTY	Pallet W
70796-00015	Anna TIPO 00 Flour	10/1 kg	22.5 lb	12x8	2210.0 lb
70796-00016	Anna TIPO 00 Flour	2/5 kg	21.7 lb	10x8	1786.0 lb
70796-00018	Anna Organic TIPO 00 Flour	10/1 kg	24.0 lb	15x6	2210.0 lb

# COOK TIMES

UPC	DESCRIPTION	PAR COOK	AL DENTE
TRADITIONAL SEMOLINA LONG CUTS			
70796-33006	FETTUCINE #6	4.5 MIN	8-9 MIN
70796-33007	LINGUINE #7	4 MIN	9-10 MIN
70796-33008	LINGUINE FINI #8	3 MIN	4-5 MIN
70796-33009	CAPELLINI #9	--	2-3 MIN
70796-33011	SPAGHETTINI #11	4 MIN	5-6 MIN
70796-33012	SPAGHETTI #12	5 MIN	10-11 MIN
70796-33015	BUCATINI #15	4 MIN	7-8 MIN
TRADITIONAL SEMOLINA SHORT CUTS			
70796-33018	CUT ZITI #18	5 MIN	7-8 MIN
70796-33021	ELICOIDALI #21	4 MIN	8-9 MIN
70796-33023	MEZZI RIGATONI #23	6 MIN	8-9 MIN
70796-33024	RIGATONI #24	6 MIN	11-12 MIN
70796-33034	FUSILLI #34	4 MIN	7-8 MIN
70796-33040	PENNE #40	5 MIN	7-8 MIN
70796-33041	PENNE RIGATE #41	6 MIN	9-10 MIN
70796-33042	PENNINE RIGATE #42	5 MIN	9-10 MIN
70796-33046	GNOCCHI #46	6 MIN	7-8 MIN
70796-33050	SHELLS #50	7 MIN	12-13 MIN
70796-33054	ROTELLE #54	4 MIN	6-7 MIN
70796-33087	CAVATAPPI #87	6 MIN	6-7 MIN
70796-33088	GEMELLI #88	5 MIN	9-10 MIN
70796-33089	RADIATORI #89	3 MIN	5-6 MIN
SOUP CUTS			
70796-33052	BABY SHELLS #52	--	7-8 MIN
70796-33062	TUBETTI #62	5 MIN	8-9 MIN
70796-33063	DITALINI #63	--	5-6 MIN
70796-33065	DITALI #65	4 MIN	8-9 MIN
70796-33071	ANELLINI #71	--	5-6 MIN
70796-33074	ORZO #74	--	6-7 MIN
70796-33075	PASTINA #75	4 Min	4-4 Min
70796-33078	ACINI DI PEPE #78	--	6-7 MIN
70796-33081	ELBOWS #81	4 MIN	7-8 MIN
70796-33095	FARFALLINE #95	--	8-9 MIN
LASAGNE			
70796-33001	TRADITIONAL LASAGNE	4 MIN	7-9 MIN
70796-33002	NO BOIL LASAGNE	--	--
GNOCCHI			
70796-36005	POTATO MINI GNOCCHI	--	2-3 MIN
70796-36006	POTATO GNOCCHI	--	2-3 MIN



UPC	DESCRIPTION	PAR COOK	AL DENTE
SPECIAL CUTS			
70796-33016	MAFALDINE #16	5 MIN	8-9 MIN
70796-33019	LONG ZITI #19	5 MIN	8-9 MIN
70796-33035	FUSILLI CORTI COL BUCO #35	6 MIN	9-10MIN
70796-33072	ANELLINI SICILIANI #72	--	15-16 MIN
70796-33091	ORECCHIETTE #91	4 MIN	7-8 MIN
70796-33093	FARFALLE #93	5 MIN	9-10 MIN
70796-33108	LONG FUSILLI #108	8 MIN	13-14 MIN
70796-33133	JUMBO SHELLS	6 MIN	10-11 MIN
TRICOLOR CUTS			
70796-33109	TRICOLOR FUSILLI #109	6 MIN	9-10 MIN
70796-33141	TRICOLOR PENNE RIGATE #141	5 MIN	10-11 MIN
70796-33193	TRICOLOR FARFALLE #193	5 MIN	11-12 MIN
NEST CUTS			
70796-33102	PAPPARDELLE NESTS #102	6 MIN	11-12 MIN
70796-33103	FETTUCCINE NESTS #103	7 MIN	13-14 MIN
70796-33106	CAPELLI D ANGELO NESTS #106	--	4-5 MIN
70796-33107	FETTUCCINE SPINACH NESTS #107	6 MIN	12-13 MIN
70796-33104	EGG FETTUCCINE NESTS #104	6 MIN	12-13 MIN
BULK CUTS			
70796-34006	FETTUCCINE BULK #6 BULK	4 MIN	8-9 MIN
70796-34007	LINGUINE #7 BULK	4 MIN	8-9 MIN
70796-34009	CAPELLINI BULK #9 BULK	--	2-3 MIN
70796-34012	SPAGHETTI #12 BULK	5 MIN	10-11 MIN
70796-34041	PENNE RIGATE #41 BULK	6 MIN	10-11 MIN
70796-34024	RIGATONI #24 BULK	6 MIN	11-12 MIN
ORGANIC WHOLE WHEAT CUTS			
70796-35012	ORG. WHOLE WHEAT SPAGHETTI #12	4 MIN	8-9 MIN
70796-35041	ORG. WHOLE WHEAT PENNE RIGATE #41	5 MIN	9-10 MIN
GLUTEN FREE			
70796-37112	SPAGHETTI	5 MIN	10-11 MIN
70796-37141	PENNE RIGATE	6 MIN	10-11 MIN
70796-37181	ELBOWS	3 MIN	5-6 MIN



**“Trust Your Family With Our Family”<sup>®</sup>**

**Cento Italia**

+39 0872 700424

Via San Nicola, 4 • 66043 Casoli • Chieti

**Cento Fine Foods  
Regional Sales Offices**

**New England**  
856-986-4910

**New York**  
856-296-7207

**Florida**  
856-628-3289

**Maryland**  
447-299-8208

**Midwest**  
609-841-7195

**North West**  
510-921-4648

**South West**  
609-970-0371

100 Cento Boulevard West Deptford, NJ 08086 • tel 856.853.7800 • fax 856.853.0962 • [www.cento.com](http://www.cento.com)



Our Quality Assurance Partners

